

ASSEMBLY INSTRUCTION

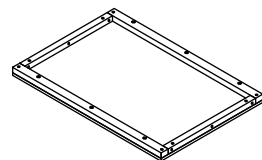
ILW30 - 1 DRAWER WARDROBE

HARDWARE LIST

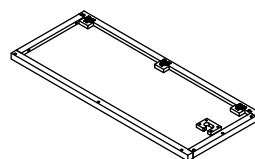
NO	HARDWARE NAME	IMAGE	QTY (PCS)
①	BOLT M6x60		26 PCS
②	BOLT M6x20		4 PCS
③	SEMICIRCLE WASHER		10 PCS
④	FLAT WASHER M6		4 PCS
⑤	SPRING WASHER M6		4 PCS
⑥	ALLEN KEY M4		1 PCS
⑦	HINGE		6 PCS
⑧	SCREW 3*15		12 PCS
⑨	METAL PLATE		2 PCS

PART LIST

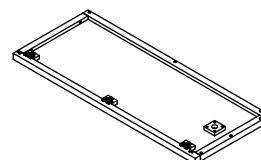
A TOP = 1 PC



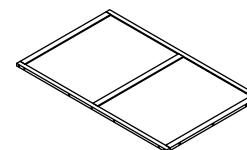
B SIDE FRAME (L) = 1 PC



C SIDE FRAME (R) = 1 PC



D BACK FRAME = 1 PC



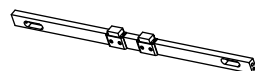
E HANGING RAIL = 1 PC



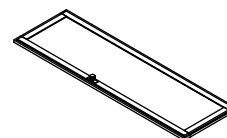
F CROSS BAR (TOP) = 1 PC



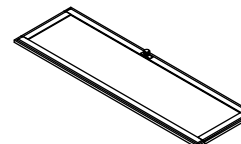
G CROSS BAR (BOTTOM) = 1PC



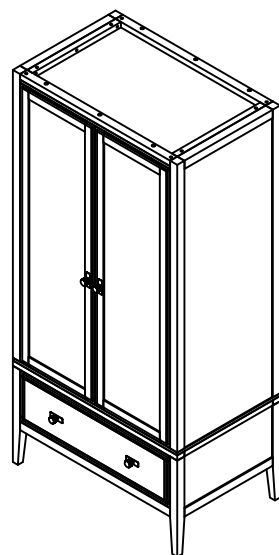
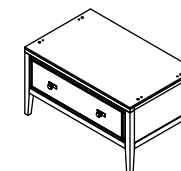
H DOOR (L) = 1 PC



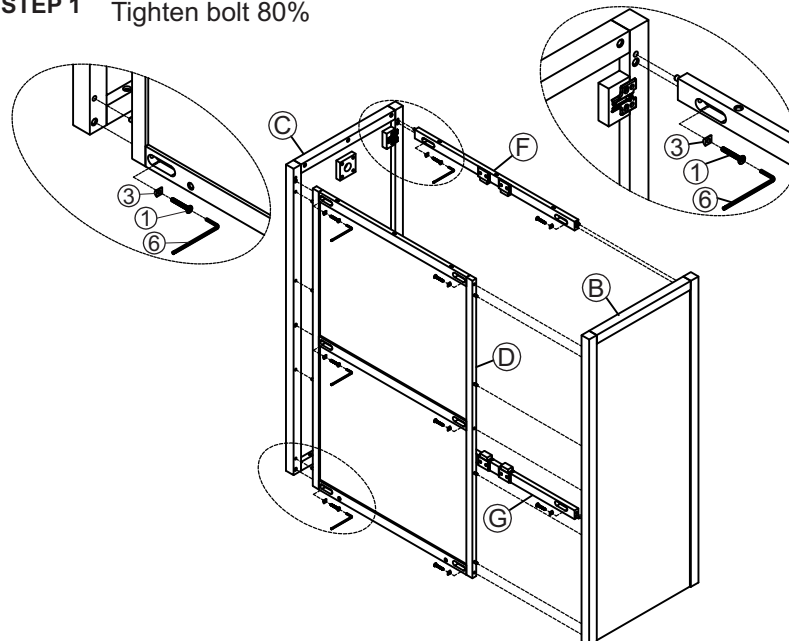
I DOOR (R) = 1 PC



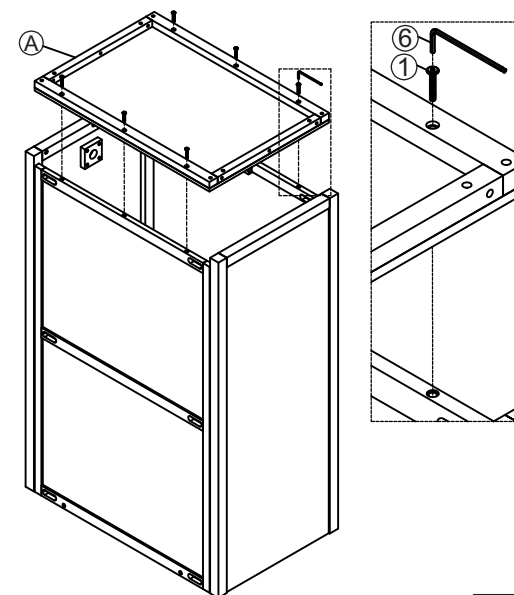
J BASE = 1 PC

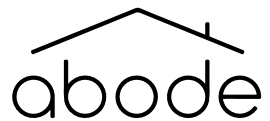


STEP 1 Tighten bolt 80%



STEP 2

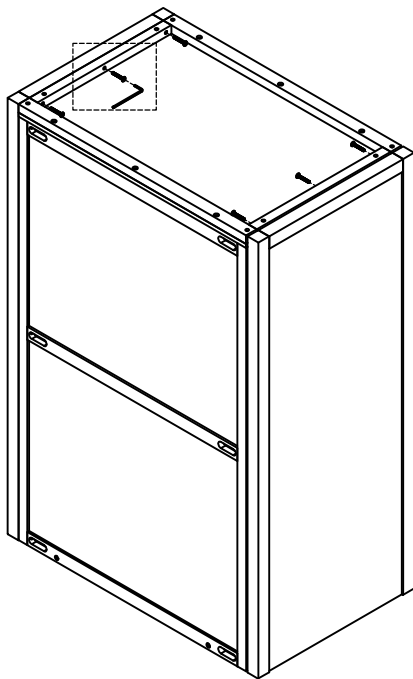
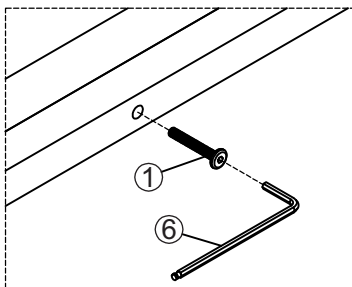




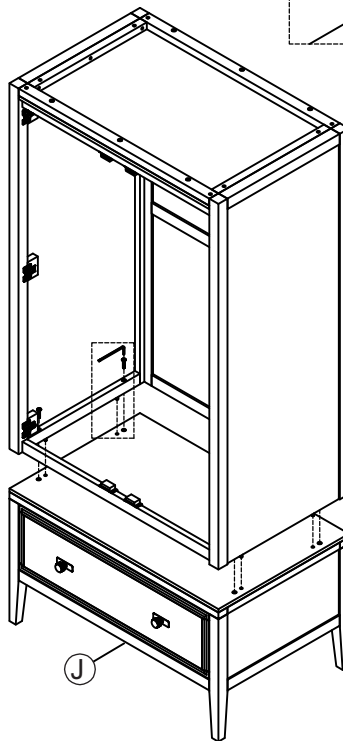
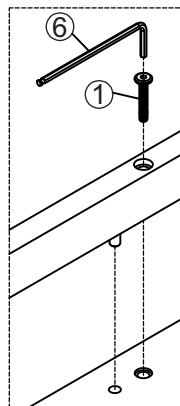
ASSEMBLY INSTRUCTION

ILW30 - 1 DRAWER WARDROBE

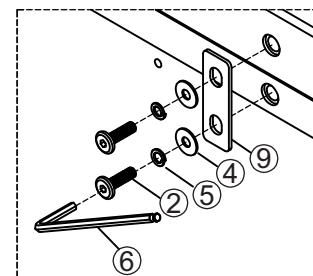
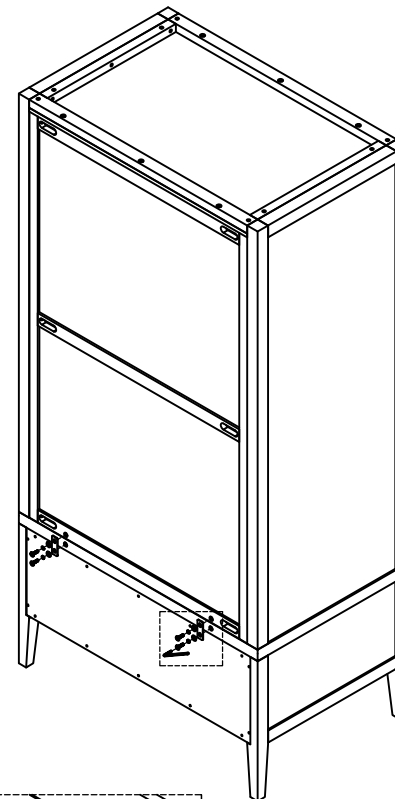
STEP 2 Tighten all bolt 100%



STEP 3



STEP 4

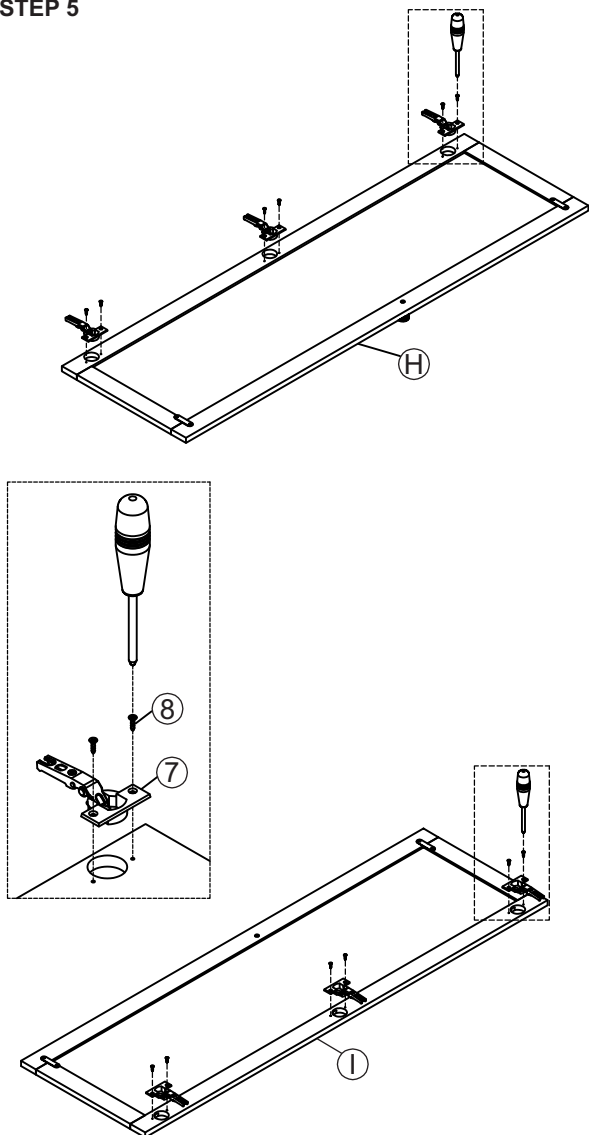




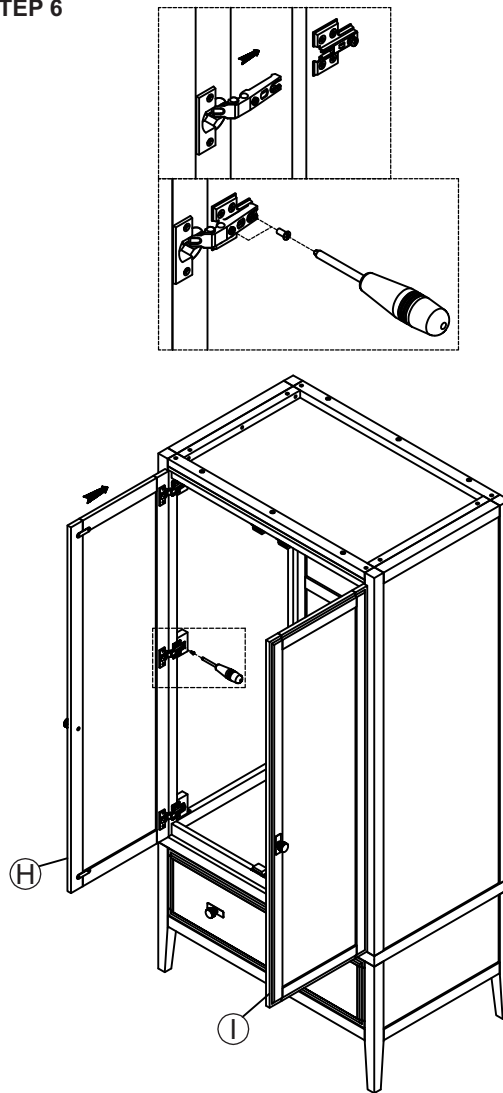
ASSEMBLY INSTRUCTION

ILW30 - 1 DRAWER WARDROBE

STEP 5



STEP 6



STEP 7

